



## International J/22 Class Association 2016 World Championship

Hosted by CORK/Sail Kingston  
Kingston, Ontario, Canada  
August 19-25, 2016



# SAILING INSTRUCTIONS

*[DP]* In the SI's means for the indicated SI a penalty is at the discretion of the Jury.

*[NP]* In the SI's means for the indicated SI that the infringement is not subject to protest by a competitor.

## 1 RULES

The regatta will be governed by the rules as defined in *The Racing Rules of Sailing*. (RRS) including the Sail Canada Prescriptions set out in Addendum B.

The class rules for the purposes of the definition of *rule* will be the International J/22 Class Rules, except under rule 87, rule 4.6 of the class rules is modified to allow Chartered or Loaned boats to carry national letters or a sail number or both in contravention of the J22 Class Rules.

In the event of a conflict between languages, the English text will take precedence.

**U Flag Rule** - If flag U [2 white and 2 red offset squares] has been displayed as the preparatory signal, no part of a boat's hull, crew or equipment shall be in the triangle formed by the ends of the starting line and the first *mark* during the last minute before her starting signal. If a boat breaks this rule and is identified, she shall be disqualified without a hearing, but not if the race is restarted or re-sailed. This changes RRS 26.

Racing rule 63.7 will be replaced by: "If there is a conflict between a rule in the notice of race and a rule in the Sailing Instructions, the rule in the Sailing Instructions shall take precedence."

Boats shall display bow numbers and a sponsor's logo. The organizing authority will supply the numbers and logo.

## 2 NOTICES TO COMPETITORS

Notices to competitors will be posted on the official notice board(s) located in the Measurement Hall at Portsmouth Harbour.

## 3 CHANGES TO SAILING INSTRUCTIONS

Any change to the sailing instructions will be posted before 0900 on the day it will take effect, except that any change to the schedule of races will be posted by 2000 on the day before it will take effect.

## 4 SIGNALS MADE ASHORE

4.1 Signals made ashore will be displayed at the CORK Flag Pole on the East side of the parking lot by the Measurement Hall.

4.2 When flag AP is displayed ashore, '1 minute' is replaced with 'not less than 30 minutes' in the race signal AP.

4.3 When flag Y is displayed ashore, rule 40 applies at all times while afloat. This changes the Part 4 preamble.

## 5 SCHEDULE OF RACES

### 5.1 Dates of racing:

|                      |              |  |
|----------------------|--------------|--|
| Sunday, August 21    | 1000         | North Sails Dock talk and tune - Mike Marshall |
|                      | 1300         | Practice race                                  |
|                      | 1700         | Dock talk and race review - Quantum Sails      |
|                      | 1800         | Opening Ceremony                               |
| Monday, August 22    | 0830         | Competitor Briefing                            |
|                      | 1100         | RACE DAY 1 - Warning signal first race         |
|                      | After racing | North Sails Daily debrief – Mike Marshall      |
|                      | 1900         | BBQ dinner at Portsmouth Harbour               |
| Tuesday, August 23   | 1100         | RACE DAY 2 - Warning signal first race         |
|                      | After racing | Dock talk and race review - Quantum Sails      |
|                      | 1900         | Regatta dinner at Fort Henry                   |
| Wednesday, August 24 | 1100         | RACE DAY 3 - Warning signal first race         |
|                      | After racing | North Sails Daily debrief – Mike Marshall      |
|                      | 1900         | Night out in Kingston                          |
| Thursday, August 25  | 1100         | RACE DAY 4 - Warning signal first race         |
|                      | 1400         | No warning signal after this time              |
|                      | After racing | Awards, Closing Ceremony                       |

5.2 **Number of races:** Ten Races total are scheduled with 3 or more races per day planned.

5.3 To alert boats that a race or sequence of races will begin soon, the orange starting line flag may be displayed with one sound at least five minutes before a warning signal is made.

5.4 On the last day of the regatta no warning signal will be made after 1400.

## 6 CLASS FLAGS

Class flags will be a white flag with the Class Insignia in a contrasting colour

## **7 RACING AREAS**

The racing area will be west of Portsmouth harbour. A diagram of the course area will be on the regatta notice board and is provided in Attachment C.

## **8 THE COURSES**

**8.1** The diagrams in Attachment B show the courses, the order in which marks are to be passed, and the side on which each mark is to be left. A windward offset mark will be laid approximately perpendicular to the course axis. The windward offset mark is to be rounded to port.

**8.2** No later than the warning signal, the race committee signal boat will display the approximate compass bearing of the first leg. The Race Committee may also broadcast this information via VHF Channel 72. Failure to broadcast or receive this information shall not be grounds for redress by a boat. This changes rule 62.1(a).

**8.3** If a gate mark is missing when boats are about to round it then they shall round the remaining mark to port.

## **9 MARKS**

**9.1** Marks will be yellow inflatables.

**9.2** New marks, as provided in instruction 12.1, will be orange inflatables.

**9.3** The starting and finishing marks will be the race committee signal boat at the starboard end and a buoy or RC boat at the port end.

**9.4** A race committee boat signalling a change of a leg of the course is a mark as provided in instruction 12.3.

## **10 INTENTIONALLY LEFT BLANK**

## **11 THE START**

**11.1** The starting line will be between staffs displaying an orange signal on the starting marks.

**11.2** A boat starting later than 5 minutes after her starting signal will be scored Did Not Start without a hearing. This changes rule A4. *[NP]*

## **12 CHANGE OF THE NEXT LEG OF THE COURSE**

**12.1** To change the next leg of the course, the race committee will lay a new mark (or move the finishing line) and remove the original mark as soon as practicable. When in a subsequent change a new mark is replaced, it will be replaced by an original mark.

**12.2** If Mark 1 is changed after the start of a race, there will be no offset mark (Mark1a)

**12.3** Except at a gate, boats shall pass between the race committee boat signalling the change of the next leg and the nearby mark, leaving the mark to port and the race committee boat to starboard. This changes rule 28.

## **13 THE FINISH**

**13.1** The finishing line will be between staffs displaying an orange shape on the finishing marks.

**13.2** Flag “A” displayed with no sound while boats are finishing means “no more racing today”

## **14 PENALTY SYSTEM**

Rule 44.1 is changed to permit a boat that has broken a rule of Part 2 or rule 31 to take a penalty after racing but prior to any protest hearing. Her penalty shall be a scoring penalty as calculated in rule 44.3(c) equal to 40% of the number of entries in her class or 50% of the difference between her finishing position and the number of entries in her class, whichever is less. However, if she caused injury or serious damage or gained a significant advantage in the race or series by her breach, her penalty shall be to retire.

## **15 TIME LIMITS AND TARGET TIMES**

**15.1** Time limits and Target Times are as follows:

Target time for first boat to finish the race will be 1:30 (one and a half hours). Failure to meet the target time will not be grounds for redress. This changes rule 62.1(a).

Time limit for the first boat to finish the race shall be 2:00 (two) hours.

If no boat completes three legs within 1:30 (one and one-half) hours, the race shall be abandoned and, if possible, re-sailed.

Boats failing to finish within 30 minutes after the first boat sails the course and finishes will be scored Time Limit Expired (TLE) without a hearing. A TLE score shall be the two (2) more points than the number of boats that have finished within the time limit. This changes RRS 35, A4, A5, and A11.

## **16 PROTESTS AND REQUESTS FOR REDRESS**

**16.1** Protest forms are available at the race office located at the CORK Jury desk. Protests and requests for redress or reopening shall be delivered there within the appropriate time limit.

**16.2** The protest time limit is 90 minutes after the last boat has finished the last race of the day or the race committee signals no more racing today, whichever is later.

**16.3** Notices will be posted no later than 30 minutes after the protest time limit to inform competitors of hearings in which they are parties or named as witnesses. Hearings will be held in the protest room, located near the Jury Desk beginning as soon as possible after the Protest time expires.

**16.4** Notices of protests by the race committee or protest committee will be posted on the official notice board to inform boats under rule 61.1(b).

**16.5** Breaches of instructions 11.2, 18 and 21 will not be grounds for a protest by a boat. This changes rule 60.1(a). Penalties for these breaches may be less than disqualification if the protest committee so decides.

**16.6** On the last scheduled day of racing a request for reopening a hearing shall be delivered

- (a) within the protest time limit if the requesting party was informed of the decision on the previous day;
- (b) no later than 30 minutes after the requesting party was informed of the decision on that day.

This changes rule 66.

**16.8** On the last scheduled day of racing a request for redress based on a protest committee decision shall be delivered no later than 30 minutes after the decision was posted. This changes rule 62.2.

**16.9** Decisions of the international jury will be final as provided in rule 70.5.

## **17 SCORING**

- 17.1** The Low Point System of Appendix A will apply, as modified by SI 17.2 and 4 races are required to be completed to constitute a series.
- 17.2** (a) When fewer than 6 races have been completed, a boat's series score will be the total of her race scores.
- (b) When from 6 to 10 races have been completed, a boat's series score will be the total of her race scores excluding her worst score.
- 17.3** To request correction of an alleged error in posted race or series results, a boat may complete a scoring enquiry form available at the Jury Desk.

## **18 SAFETY REGULATIONS [DP] [NP]**

- 18.1** **Competitors will check-out and check-in strictly in accordance with check-in/check-out procedure.** All competitors are required to sign out before leaving for the race course and sign in immediately upon returning to harbour. The sign in – sign out sheets will be located on tables just outside the CORK office.
- 18.2** Failure to comply with SI 18.1 by the end of protest time shall result in a competitor having points equal to 10% of the registered fleet rounded upwards to the nearest whole number added to their score without a hearing for the first violation, and 20% for the second violation. This changes A5 as a penalty by the RC without a hearing.
- 18.3** A boat that retires from a race shall notify the race committee as soon as possible and may do so by using VHF 72.

## **19 REPLACEMENT OF CREW OR EQUIPMENT**

- 19.1** Substitution of competitors will not be allowed without prior written approval of the jury.
- 19.2** Substitution of damaged or lost equipment will not be allowed unless authorized by the jury. Requests for substitution shall be made to the committee at the first reasonable opportunity.

## **20 EQUIPMENT AND MEASUREMENT CHECKS**

A boat or equipment may be inspected at any time for compliance with the class rules and sailing instructions. On the water, a boat can be instructed by a race committee equipment inspector or measurer to proceed immediately to a designated area for inspection.

## **21 EVENT ADVERTISING [NP]**

Boats shall display event advertising with their bow numbers as supplied by the organizing authority.

- 21.1** Boats may only display other advertising as per ISAF Regulation 20 and the Class Rules

## **22 INTENTIONALLY LEFT BLANK**

## **23 SUPPORT BOATS [DP]**

Personal support boats will not be allowed.

Penalties for infringing this sailing instruction may be applied to the offending support personnel and/or the boat or boats being supported. A penalty applied to a boat shall be applied to the race nearest in time to the incident.

For the purposes of the rules governing this competition, a support boat includes any boat that is under the control or direction of a person who is providing or who may provide physical or advisory support to an athlete, including the gathering of data that may be used at a later time..

**24 TRASH DISPOSAL [DP]**

Boats shall not put trash in the water.

**25 HAUL-OUT RESTRICTIONS**

Boats will be launched at Portsmouth Harbour.

Berthing will be available at Portsmouth Harbour.

Boats shall be kept at Portsmouth Harbour in their assigned places for the duration of the event.

Boats are advised of the need to bring extra dock lines and fenders as there will be a need to raft.

Boats will be afloat by 1800 on August 21. Except with, and according to the terms of, prior written permission from the International Jury, boats will not be hauled out for the duration of the regatta. Rudders will remain affixed during the time afloat.

**26 DIVING EQUIPMENT AND PLASTIC POOLS**

Underwater breathing apparatus and plastic pools or their equivalent will not be used around boats for the duration of the regatta beginning at 1800 Sunday, August 21.

**27 RADIO COMMUNICATION [DP]**

**27.1** Except in an emergency, a boat shall neither make radio transmissions nor receive radio communications not available to all boats. This restriction also applies to mobile telephones.

**27.2** The race committee intends to use VHF marine radio channel 72 to broadcast courtesy formation to competitors, including OCS hails after starts.

**27.3** Failure of the Race Committee to hail, failure of the amplification system or radios, the order of the hail, or failure of a boat to hear a hail shall not be grounds for a boat to request redress. This instruction changes RRS 41 and 62.1.

**27.4** All boats must be equipped with a working marine VHF transmitter/receiver.

**28 PRIZES**

Prizes will be given as follows:

- Prizes will be awarded to the top 10 finishers, with the top finisher being named the 2016 J22 World Champion
- Mid-fleet (50% of registered finishers, plus 1 if an even number of finishers)
- Master's - Top Master (skipper age 55 or older and average age of total crew 40 or older)
- Top Under 25 (skipper age under 25)

**29 DISCLAIMER OF LIABILITY**

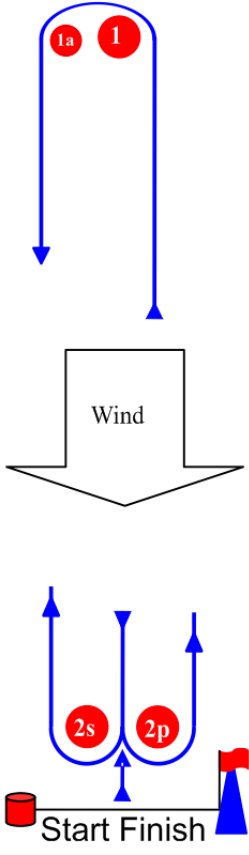
Competitors participate in the regatta entirely at their own risk. See rule 4, Decision to Race. The organizing authority will not accept any liability for material damage or personal injury or death sustained in conjunction with or prior to, during, or after the regatta.

**30 INSURANCE**

Each participating boat shall be insured with valid third-party liability insurance with a minimum cover of \$300,000 CDN per incident or the equivalent.

# ADDENDUM A THE COURSES

## Windward-Leeward Course

| Course   | Description  |   |
|--|--|---|
|  | Windward/Leeward offset mark 1a with Downwind finish |   |
|  | Possible courses                                     |   |
|  | Signal   | Mark Rounding Order                     |
|  | LA2  | Start-1-1a-2s/2p-1-1a-Finish            |
|  | LA3  | Start-1-1a-2s/2p-1-1a-2s/2p-1-1a-Finish |

## ADDENDUM B

### Sail Canada Prescriptions 2013–2016

Effective 1 January 2013

**Sail Canada prescribes:**

#### **Rule 46 – Person in Charge**

*Sail Canada prescribes that the designated person in charge, if resident in Canada, shall be a member of a club affiliated with Sail Canada.*

#### **Rule 61.2 – Protest Contents**

*Sail Canada prescribes that no fee shall be charged for delivering a protest or a request for redress.*

#### **Rule 64.3 – Decisions on Protests Concerning Class Rules (insert directly under the title to the rule)**

*Sail Canada prescribes that unless otherwise provided in its class rules, the ISAF Equipment Rules of Sailing shall apply to all classes racing in Canada.*

#### **Rule 67 – Damages**

*Sail Canada prescribes that a boat that has been found by a protest committee to have broken a rule and caused damage shall be considered at fault for the purposes of rule 67.*

#### **Rule 88.2 National Prescriptions**

*Sail Canada prescribes that the sailing instructions of national or lesser events shall not change or delete any Sail Canada prescription. For events that have a no appeal protest committee or an international jury, prescriptions to rule 61.2 and 67 shall not be deleted.*

#### **Appendix E8 – Appendix G Changes to Identification on Sails (insert directly under title to the rule)**

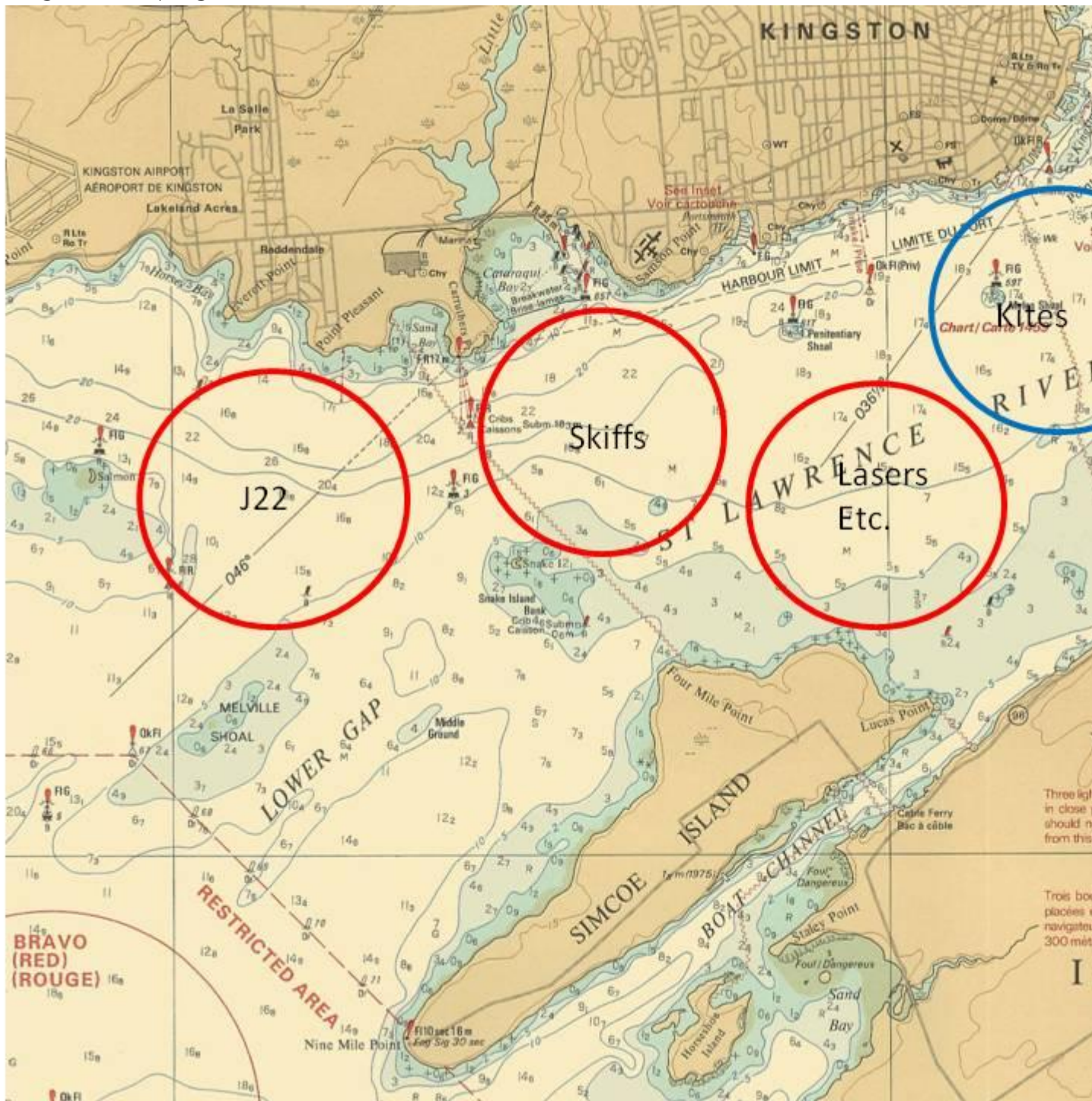
*Sail Canada prescribes that this rule applies to Canadian boats in all classes.*

#### **Add to sailing instruction 14 – Penalty System:**

Rule 44.1 is changed to permit a boat that has broken a rule of Part 2 or rule 31 to take a penalty after racing but prior to any protest hearing. Her penalty shall be a scoring penalty as calculated in rule 44.3(c) equal to 40% of the number of entries in her class or 50% of the difference between her finishing position and the number of entries in her class, whichever is less. However, if she caused injury or serious damage or gained a significant advantage in the race or series by her breach, her penalty shall be to retire.



# ATTACHEMENT C





**International J/22 Class Association  
2016 World Championship**

**Sponsors**

