



# SAILING

# INSTRUCTIONS

**Soling North American Championship**

**August 7-11, 2019**

**Kingston, Ontario, Canada**





## 2019 Soling North Americans

Wednesday August 7 –  
Sunday August 11  
**SAILING INSTRUCTIONS**



### 1. RULES

- 1.1 The regatta will be governed by the rules as defined in The Racing Rules of Sailing.
- 1.2 Canadian Sailing prescriptions will apply (see Attachment 3).
- 1.3 ISA Championship Rules will apply.
- 1.4 As permitted by RRS 86.1(c), racing rules 42.3(c) and 31 will be changed as follows:
  - a) RRS 42.3 (c) is altered to : Except on a beat to windward, when surfing (rapidly accelerating down the leeward side of a wave ) or planing is possible ,the crew may pull the sheet controlling any sail in order to initiate surfing or planing, but not more than twice for each wave or gust of wind. The pumping of the main sheet directly from the main sheet boom block is permitted. In addition, pumping of the spinnaker guy is permitted at all times without restriction. In this part of the Rule "pumping of the spinnaker guy" means repeatedly trimming and releasing the guy by any means. Moving the body as reasonably necessary to pump the guy is permitted and shall not be considered to be ooching (see RRS 42.2 (c)), nor shall any rolling of the boat caused by such reasonably necessary movements be considered rocking (see RRS 42.2 (b)).
  - b) RRS 31 is altered to: "While racing, neither the crew nor any part of a boat's hull shall touch a starting mark before starting, a mark that begins, bounds or ends the leg of the course on which she is sailing, or a finishing mark after finishing. In addition, while racing, a boat shall not touch a race committee vessel that is also a Mark."
  - c) RRS 63.7 is altered when there is a conflict between the Notice of Race and these Sailing Instructions, the Sailing Instructions will take precedence.
- 1.5 Special Rule: After the warning signal for a race the registered helmsperson shall not leave the helm except in an emergency or with the prior written permission of the Race Committee.
- 1.6 Where there is a conflict between languages the English text will take precedence.
- 1.7 Amendments to any of the rules applying to the regatta must be approved and signed by the ISA Liaison Officer appointed for the event.

### 2. NOTICES TO COMPETITORS

Notices to competitors will be posted on the official notice board located in the Sail Measurement Hall, to the East of the lobby.

### 3. CHANGES TO SAILING INSTRUCTIONS

- 3.1 After the beginning of registration the following Sailing Instructions may not be changed: 1, 3, 5.2, 8.3, 17.
- 3.2 Any change to the sailing instructions will be before 0930 on the day that it will take effect, except that any change to the schedule of races will be posted by 20:00 on the day before it will take effect.

### 4. SIGNALS MADE ASHORE

- 4.1 Signals made ashore will be displayed at the flagpole located at the NE corner of the main building.
- 4.2 When flag AP is displayed ashore, '1 minute' is replaced with 'not less than 45 minutes' in the race signal AP.

- 4.3 [DP] Boats shall NOT leave the dock until flag D is displayed with one sound. The warning signal will be made not less than 45 minutes after flag D is displayed.
- 4.4 When a signal is displayed over a fleet or course flag, it applies to that fleet or course only.

## **5. SCHEDULE OF RACES**

### **5.1 Dates of Racing:**

<i>Date</i>	<i>Races</i>
Thursday August 8	2
Friday August 9	3
Saturday August 10	3
Sunday August 11	2

- 5.2 10 races are scheduled of which 4 must be completed to constitute a valid championship. A maximum of 4 races per day may be sailed. An extra race may be sailed on any day provided that that does not cause the number of remaining races to be less than the number of scheduled race days remaining. AP over A will be signalled at the finish if no more races are scheduled for that day.
- 5.3 The scheduled time of the warning signal on the first day is 1200 hrs; on subsequent days it will be 1100.
- 5.4 When a subsequent race will be held on a day the warning signal for that race will be made as soon as practicable. To alert boats that a race will begin soon the orange flag will be displayed with one sound for at least 1 minute before a warning signal is made.
- 5.5 On the last day of the regatta no warning signal will be made after 1400 hrs.

## **6. CLASS FLAG**

The Class flag will be the class logo on a white background. (N.B. The course will be shared on Saturday and Sunday with J22s, their class flag is a J22 on a white background.)

## **7. RACING AREAS**

Attachment 1 shows the location of the racing areas.

## **8. THE COURSE**

- 8.1 The diagram in Attachment 2 show the course, including the approximate angle between legs, the order in which marks are to be passed and the side on which each mark is to be left.
- 8.2 No later than the warning signal, the race committee signal boat will display the approximate distance of the first leg and the approximate compass bearing of the first leg.
- 8.3 Courses may only be shortened by eliminating the final lap or individual legs of that lap. This changes RRS 32. The segment from the last gate to the finish line (mini reach) is not a leg but part of the last downwind leg of the course.

## **9. MARKS**

- 9.1 Marks 1, 1a (offset mark), and 3s-3p will be Orange inflatables.
- 9.2 New marks as provided in SI 12.1 will be Yellow inflatables.
- 9.3 The starting and finishing marks will be Orange flags.
- 9.4 A race committee vessel signalling a change of a leg of the course is a mark as provided in SI 12.2.

## **10. AREAS THAT ARE OBSTRUCTIONS**

N/A

## **11. THE START**

- 11.1 Races will be started by using RRS 26 with the warning signal made 5 minutes before the starting signal.

- 11.2 The starting line will be between a staff displaying an orange flag on the signal boat, and either the course side of the starting mark, or a staff displaying an orange flag on a pin-end race committee boat.
- 11.3 A boat that does not start within four (4) minutes after her starting signal will be scored Did Not Start without a hearing. This changes RRS A4 and A5.
- 11.4 The initial starting sequence each day will be 1) Soling, and 2) J22

## **12 CHANGE OF THE NEXT LEG OF THE COURSE**

- 12.1 To change the next leg of the course, the race committee will lay a new mark (or move the finishing line) and remove the original mark as soon as practicable. When in a subsequent change a new mark is replaced, it will be replaced by an original mark.
- 12.2 Except at a gate, boats shall pass between the race committee vessel signalling the change of the next leg and the nearby mark, leaving the mark to port and the race committee vessel to starboard. This changes RRS 28
- 12.3 Mark 1a will NOT be replaced if there is a change of course.

## **13 THE FINISH**

The finishing line will be between a staff displaying an orange flag on a race committee vessel and the adjacent mark.

## **14 PENALTY SYSTEM**

- 14.1 The first two sentences of RRS 44.1 are changed to: 'A boat may take a One-Turn Penalty when she may have broken one or more rules of Part 2 or rule 31 of the RRS in an incident while racing.
- 14.2 A boat that has taken a penalty or retired shall complete an acknowledgement form at the race office within the protest time limit.

## **15 TIME LIMITS**

- 15.1 The time limits for the leading boat are:
 

<u>Mark 1</u>	<u>Race</u>
30 minutes	2.0 hours

If no boat has passed Mark 1 within the Mark 1 time limit the race will be abandoned. Failure to meet the target time will not be grounds for redress. This changes RRS 62.1(a).
- 15.2 Boats finishing more than 25 minutes after the first boat sails the course and finishes will be scored Did Not Finish without a hearing, this changes RRS 35, A4 and A5

## **16. PROTESTS AND REQUESTS FOR REDRESS**

- 16.1 Protest forms are available from the Protest Desk in the main lobby of the Portsmouth Olympic Harbour building. Protests and requests for redress or reopening shall be delivered there within the appropriate time limit.
- 16.2 The protest time limit is 90 minutes after the last boat has finished in the last race of the day or the race committee signals no more racing today, whichever is later
- 16.3 Notices will be posted no later than 30 minutes after the protest time limit to inform competitors of hearings in which they are parties or witnesses. Hearings will be held in a room adjacent to the Protest Desk, beginning no earlier than the time posted unless agreed by all parties. Participants should meet by the Protest Desk and they will be escorted to the appropriate room.
- 16.4 Notices of protests by the race committee, technical committee, or protest committee will be posted to inform boats under Rule 61.1(b).
- 16.5 Breaches of SI 11.3, 14 and 18,21, 23, 25, 26, 27 will not be grounds for protest by a boat. This changes Rule 60.1(a).

- 16.6 On the last scheduled day of racing a request for redress, based on a protest committee decision shall be delivered no later than 30 minutes after the decision was posted. This changes RRS 62.2:

## **17. SCORING**

- 17.1 The Low Points scoring system of Appendix A as amended below will apply.
- 17.2 Four (4) races are required to be completed to constitute a championship.
- 17.3 a) When 5 or fewer races have been completed a boat's series score will be the total of her race scores.  
b) When 6 or more races have been completed a boat's series score will be the total of her race scores excluding her worst score.

## **18. SAFETY REGULATIONS**

- 18.1 Check-out and check-in. Before going on the water and immediately upon arrival ashore and no later than the protest time limit, one crew member of each competing boat shall personally sign a control form at the race office. This control form shall be completed even when returning ashore between races [DP]
- 18.2 Boats not leaving harbour for the days racing shall inform the race office. A boat that retires from a race shall notify the race committee as soon as possible. [DP]
- 18.3 When a yellow flag with a centred red vertical bar is displayed on the race committee signal boat, coaches and other team support boats shall collaborate with the race committee in providing rescue and assistance. [DP]
- 18.4 Boats arriving at a point ashore other than the harbour for any reason and that cannot get to the harbour without assistance shall report immediately by telephoning the CORK office at (613) 545-1322 [DP]. Penalties for infringing this SI shall be decided by the jury and may include having to pay the expenses of search and rescue operations.
- 18.5 No competitor shall leave the harbour until Flag D is displayed (see 4.4).
- 18.6 Competitors shall wear a personal flotation device or other adequate personal buoyancy securely fastened at all times when afloat except briefly while changing or adjusting clothing or personal equipment. Wet suits and dry suits do not constitute adequate personal buoyancy. This changes RRS 40.

## **19. REPLACEMENT OF CREW OR EQUIPMENT**

- 19.1 Substitution of competitors will not be allowed without the prior written approval of the Race Committee. Such approval may be given in case of injury, illness or other non-preventable circumstances or when notified at registration. [DP]
- 19.2 Substitution of damaged or lost equipment will not be allowed unless approved by the Race Committee. Requests for substitution shall be made to the Race Committee at the first reasonable opportunity.[DP]

## **20. EQUIPMENT AND MEASUREMENT CHECKS**

On the water, a boat can be instructed by a member of the race committee or the technical committee to proceed immediately to a designated area for inspection. Ashore, equipment may be inspected or measured at times specified in the class rules, the notice of race, the championship rules.

## **21. EVENT ADVERTISING**

N/A.

## **22. OFFICIAL BOATS**

Official boats will be marked as follows: safety/patrol boats will display a yellow flag with a centred vertical red stripe, jury boats will display a code flag J, and media boats will display a flag with the letter “M” on contrasting background.

**23. SUPPORT BOATS**

All support personnel, as defined in the RRS (as amended January 1st, 2018), shall comply with CORK’s Support Team Regulations (posted on the Official Notice Board and available online).

**24. TRASH DISPOSAL**

Trash may be placed aboard support or official boats

**25. HARBOUR, SITE, & HAUL-OUT REGULATIONS [DP]**

- 25.1 All boats shall be afloat before 1000 hours on Thursday August 8 and shall not be hauled out during the regatta except with and according to the terms of prior written permission of the race committee.
- 25.2 All boats shall be launched and hauled out as directed by the organizing authority. At the sole discretion of the organizing authority, dollies and trailers with protrusions may be prohibited from the launch area.
- 25.3 No boat, except those in assigned mooring areas, shall be left unattended in the water.
- 25.4 Boats shall be kept in their assigned areas when moored.
- 25.5 Automobiles and other vehicles must be parked only in accordance with Portsmouth Olympic Harbour, the City of Kingston and the organizing authority’s posted signage.
- 25.6 Boats will be launched at Portsmouth Olympic Harbour.
- 25.7 Boats will be afloat by 1800 on August 9. Except with, and according to the terms of, prior written permission from the Race Committee, boats will not be hauled out for the duration of the regatta.
- 25.8 Rudders will remain affixed during the time afloat.
- 25.9 Failure to follow these regulations by any competitor or the support personnel for that competitor may result in the rescinding of the entry for that competitor, or protest and subsequent disqualification from one or more races, or such other penalty as may be assessed by the protest committee.

**26. DIVING EQUIPMENT AND PLASTIC POOLS**

Underwater breathing apparatus and plastic pools or their equivalent shall not be used around boats between the starting signal of the first race and the end of the regatta. [DP]

**27. COMMUNICATIONS**

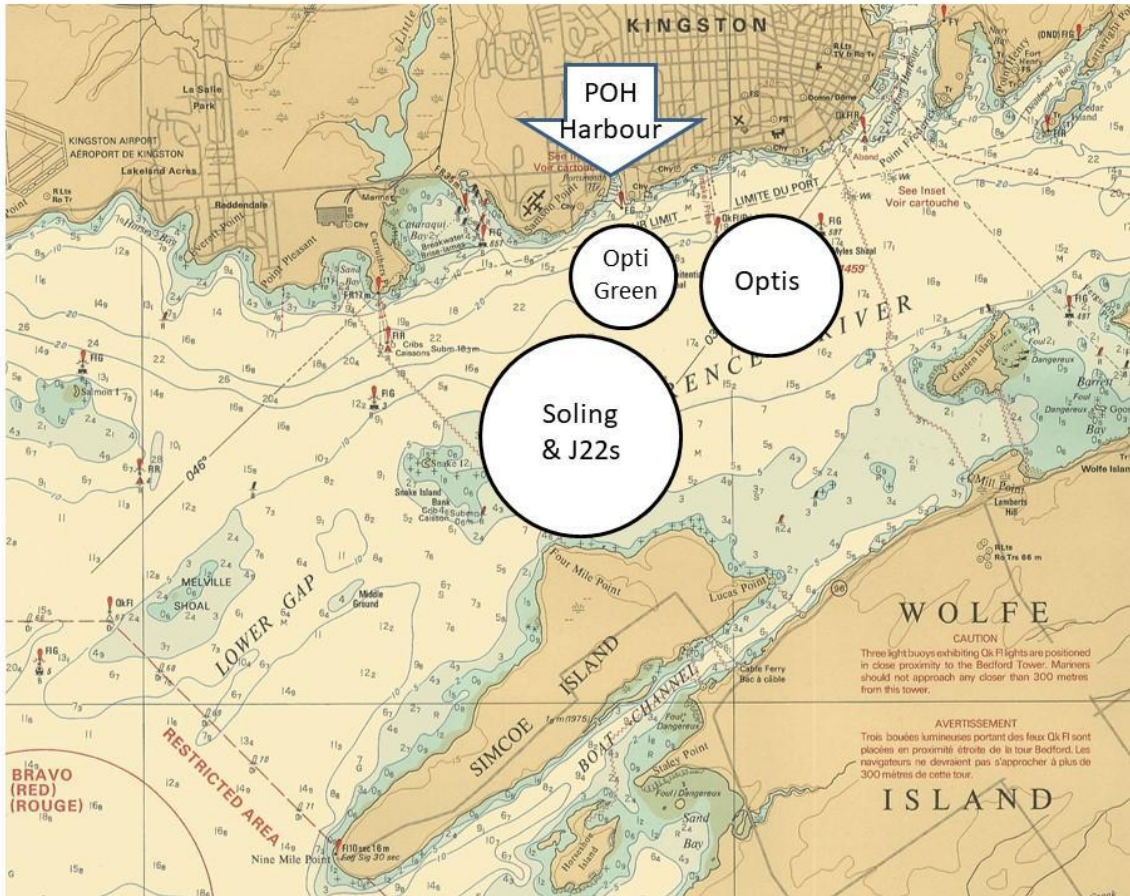
- 27.1 Except in an emergency, a boat that is racing shall not make voice or data transmissions and shall not receive voice or data communication that is not available to all boats. [DP]
- 27.2 The boats requested by the organizing authority are required to carry onboard cameras, or sound equipment provided by the OA. [DP]
- 27.3 The VHF radio channel for the course is 11.

**28. DISCLAIMER**

Competitors participate in the regatta entirely at their own risk: see RRS 4, Decision to Race, and section 20 of the Notice of Race. The organizing authority will not accept any liability for material damage or personal injury or death sustained in conjunction with or prior to, during, or after the regatta.

# ATTACHMENT 1

# RACING AREAS



## ATTACHMENT 2

## THE COURSE

All marks shall be rounded to port except when SI 12.2 applies, or in a gate.

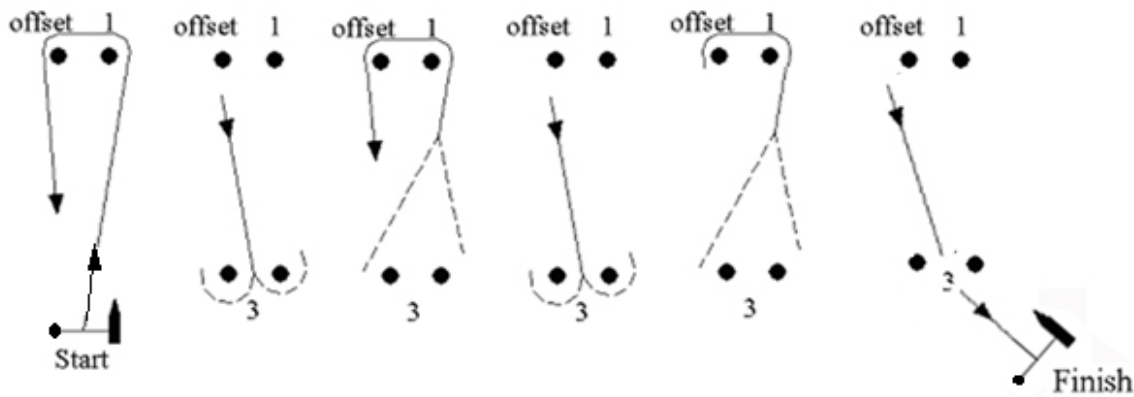
Rounding Order:

Start - 1 - Offset – 3S/3P (gate)- 1 - Offset – 3S/3P (gate)- 1 - Offset – 3S/3P (gate)– Finish

The segment '3(gate) – Finish' is not a leg.

All marks to be rounded to port. Mark 3 may be a gate.

In the first beat to windward (leg number 1) gate is not a mark of the leg.



*The length of the first beat will depend on entries quantity*

*29 entries and under about 0,75 to 1.2 NM*

*30 entries and over about 0.9 to 1.2 NM*

*The recommended distance about 1NM.*



## **ATTACHMENT 3 – NATIONAL PRESCRIPTIONS**

### **Rule 46 – Person in Charge**

Sail Canada prescribes that the designated person in charge, if resident in Canada, shall be a member of a club affiliated with Sail Canada.

### **Rule 61.2 – Protest Contents**

Sail Canada prescribes that no fee shall be charged for delivering a protest or a request for redress.

### **Rule 64.3 – Decisions on Protests Concerning Class Rules**

Sail Canada prescribes that unless otherwise provided in its class rules, the Equipment Rules of Sailing shall apply to all classes racing in Canada.

### **Rule 67 – Damages**

Sail Canada prescribes that a boat that has been found by a protest committee to have broken a rule and caused damage shall be considered at fault for the purposes of rule 67.

### **Rule 70.5(a) – Appeals and Requests to a National Authority**

Sail Canada so prescribes.

### **Rule 86.3 – Changes to the Racing Rules**

Sail Canada so prescribes.

### **Rule 88.2 – National Prescriptions**

Sail Canada prescribes that the sailing instructions for events with an international jury or no-appeal protest committee may change or delete any Sail Canada prescription except the prescriptions to rule 61.2, 67 and 91(b). The sailing instructions for other events may not change or delete any Sail Canada prescription.

### **Rule 91(b) – Protest Committee**

Sail Canada prescribes that a request for an international jury formed under rule N1.7 comprised of only three members requires written approval be obtained from Sail Canada before making the request to World Sailing.

### **Appendix E8 – Appendix G Changes to Identification on Sails**

Sail Canada prescribes that this rule applies to Canadian boats in all classes.

### **Appendix R – Procedures for Appeals and Requests**

Sail Canada prescribes that it may delegate an appeal or request for confirmation or correction to an association appeals committee, such as a provincial association appeals committee or a racing association appeals committee. Decisions of an association appeals committee may be further appealed to Sail Canada.

### **Appendix R2.1(a) – Submission of Documents**

Sail Canada prescribes that no later than 15 days after receiving the association appeals committee's written decision, the appellant may send a further appeal and a copy of the association appeals committee's decision to Sail Canada. The appeal shall state why the appellant believes the association appeals committee's decision or its procedures were incorrect.

### **Appendix R2.2 – Submission of Documents**

Sail Canada prescribes that in the case of a further appeal to Sail Canada, this rule shall apply to the appellant as though it was an initial appeal, and to the appealed committee as though it was the protest committee.

### **Appendix R3 – Responsibilities of National Authority and Protest Committee**

Sail Canada prescribes that when an appeal is delegated to an association appeals committee, the responsibilities and actions required of the national authority in this rule, and in rules R4, R5, 71.2 and 71.3, shall be performed by the association appeals committee. When a decision of an association appeals committee is further appealed, Sail Canada shall send to the parties, protest committee and association appeals committee copies of the appeal. No member of the association appeals committee shall take any part in the discussion or decision on the appeal.

### **Appendix R4 – Comments and Clarifications**

Sail Canada prescribes that when a decision of an association appeals committee is further appealed, the parties, protest committee and association appeals committee may make comments on the appeal.

Comments on the appeal shall be made no later than 15 days after receiving it from Sail Canada. Sail Canada shall send copies of the comments to the parties, protest committee and association appeals committee as appropriate.

**END**



Canada

KINGSTON

visitkingston.ca



HARKEN



ONTARIO  
Yours to discover

